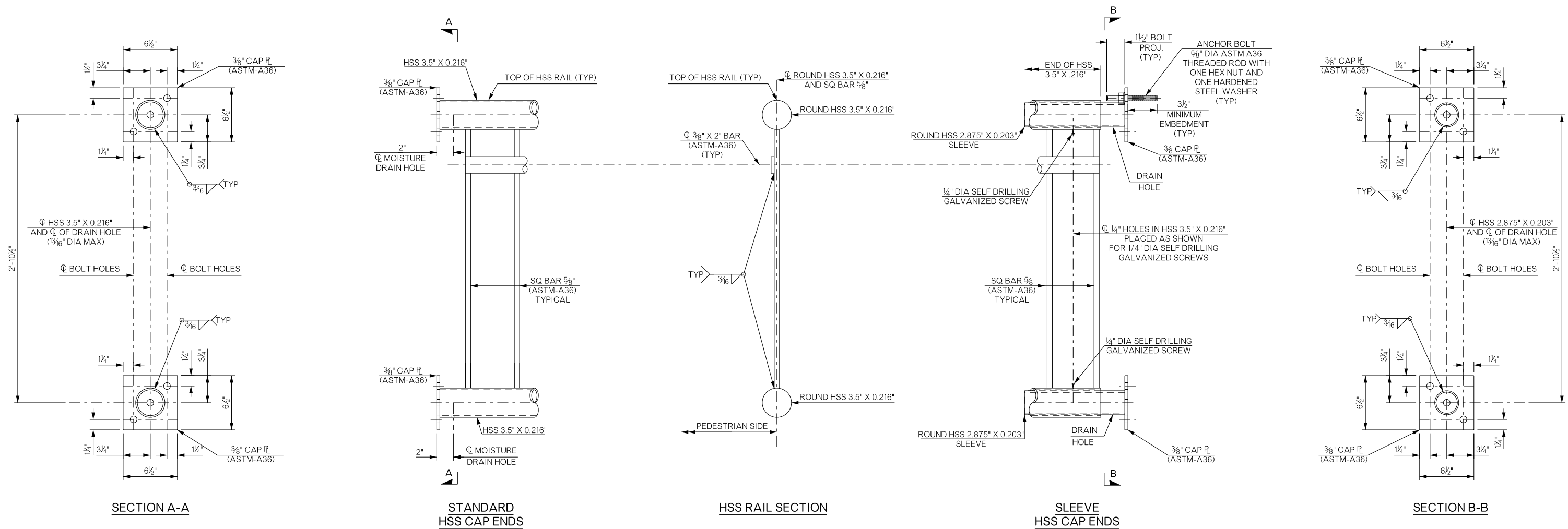


REVISIONS		
REV. NO.	DESCRIPTION	DATE



HSS RAIL DETAILS

MATERIAL NOTES:

PROVIDE HSS IN ACCORDANCE WITH ASTM-A1085, A500 GRADE B OR A53 GRADE B.
 PROVIDE STEEL PLATE AND STEEL SQUARE BARS IN ACCORDANCE WITH ASTM-A36.
 CLEAN ALL STEEL RAILING INCLUDING HSS AND SQUARE BAR SECTIONS AS WELL AS CONNECTION PLATES AND APPLY PAINT IN ACCORDANCE WITH SECTION 512 OF THE STANDARD SPECIFICATIONS. USE SHOP APPLIED PAINT FOR BOTH COATS, TOUCHING UP AS NECESSARY FOLLOWING CONSTRUCTION TO THE SATISFACTION OF THE ENGINEER. COLOR FOR HAND RAILING COMPONENTS SHALL BE GLOSS BLACK.
 REINFORCING STEEL SHALL BE GRADE 60, EPOXY COATED.
 CONCRETE SHALL BE CLASS AA CONCRETE, CHAMFERED AS SHOWN IN THE PLANS.
 ANCHOR BOLTS SHALL BE 5/8" DIAMETER THREADED RODS MEETING REQUIREMENTS OF ASTM-A36 WITH ONE HEX NUT AND ONE HARDENED STEEL WASHER PER BOLT.
 ANCHOR BOLTS SHALL BE ANCHORED USING AN ODOT APPROVED EPOXY FROM THE APPROVED PRODUCTS LIST.
 EPOXY ANCHORAGE SYSTEMS USED SHALL BE IN ACCORDANCE WITH SUBSECTION 701.13 OF THE STANDARD SPECIFICATIONS FOR HIGHWAY CONSTRUCTION AND ANCHORED ACCORDING TO THE MANUFACTURER'S MINIMUM SPECIFICATIONS TO A DEPTH OF NO LESS THAN 3 1/2".
 FOR ESTIMATING PURPOSES, THE PEDESTRIAN RAIL INCLUDES:
 22.0 LB STEEL (NON-REINFORCING) PER LINEAR FOOT.
 0.30 CY CLASS AA CONCRETE PER PILASTER.

PLAN NOTES:

THIS RAIL IS TO BE PAID FOR BY PAY ITEM *504(E) 6182 (PL) CONCRETE PARAPET (HANDRAIL TYPE).
 ALL CONCRETE AND REINFORCING EXCEPT FOR "PR1 BARS" SHALL BE INCLUDED. "PR1 BARS" ARE INCLUDED IN EPOXY COATED REINFORCING STEEL FOR BRIDGE DECK.

CONSTRUCTION NOTES:

PILASTERS MUST BE PLUMB (TRUE VERTICAL) ON ALL SIDES.
 ROUND OR CHAMFER EXPOSED EDGES OF HSS RAIL AND HSS CAPS TO APPROXIMATELY 1/8" BY GRINDING.
 PILASTERS SHALL HAVE A CLEAR COVER OF 2" UNLESS OTHERWISE SHOWN.
 TERMINATE HSS 3.500" X 0.216" AS SHOWN ON ONE END ONLY FOR EACH HSS RAIL PANEL.
 TERMINATE BAR 3/8" X 2" AS SHOWN ON EACH END OF HSS RAIL PANEL.
 SQ BAR 5/8" SHALL BE PLUMB (TRUE VERTICAL).

BRIDGE "A"		LOGAN COUNTY		Design	GT	11/15
SH-33 OVER COTTONWOOD CREEK				Detail	TIS	2/16
DETAILS OF PEDESTRIAN RAIL (SHEET 2 OF 2)				Check	TT	7/16
				Squad	PEARSON	
				Engr:	HERNANDEZ	
STATE OF OKLAHOMA		DEPARTMENT OF TRANSPORTATION				
JOBPIECE NO. 21860(04)				SHEET NO. B072		